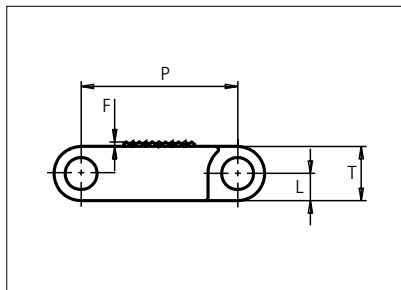




Plastic Modular Belt

Series **uni QNB** Type **Rough**



Straight running belt
 Nominal pitch: 25.4 mm (1.00 in)
 Surface type: Rough Top
 Surface opening: Closed
 Backflex radius: 40.0 mm (1.57 in)
 Pin diameter: \varnothing 8.0 mm (0.31 in)

Belt material & color	POM-SLF B		mm	in		mm	in
Pin material & color	PP B	P (Nominal)	25.4	1.00	L	4.4	0.17
		F	0.8	0.03	T	8.8	0.35

Non standard material and color: See uni Material and Color Overview.

Alternative pin and lock materials: Solid Lockpin: PA6.6 **D** Pin: PP **W** PA6.6 **B** PE **W** PBT **LG** and SS304 Endlock: PP **D**
 Lockpin: PBT **LG** PA6.6 **D** **N** PP **B** **W**

Belt width		Permissible tensile force (Belt/pin material)		Belt weight (Belt/pin material)		*Min. No. drive sprocket per shaft	Number of wear strips (Min. No.)	
		POM-SLF/PP		POM-SLF/PP			**Carry (pcs)	**Return (pcs)
mm	in	N	lbf	kg/m	lb/ft			
77	3.0	2695	606	0.6	0.43	2	2	2
153	6.0	5362	1205	1.3	0.86	2	2	2
229	9.0	8029	1805	1.9	1.30	2	2	2
305	12.0	10696	2404	2.6	1.73	3	3	2
382	15.0	13363	3004	3.2	2.16	3	3	2
458	18.0	16030	3604	3.8	2.59	4	4	2
534	21.0	18697	4203	4.5	3.02	4	4	2
610	24.0	21364	4803	5.1	3.45	5	5	3
687	27.0	24031	5402	5.8	3.88	5	5	3
763	30.0	26698	6002	6.4	4.31	6	6	3
839	33.0	29365	6601	7.0	4.74	6	6	3
915	36.0	32032	7201	7.7	5.17	7	7	4
992	39.1	34720	7805	8.3	5.60	7	7	4

Additional standard belt widths are available in steps of 76.3 mm (3.00 in.) Additional non-standard belt widths are available in steps of 25.4 mm (1.00 in.)

1983	78.1	69405	15602	16.7	11.19	14	14	7
------	------	-------	-------	------	-------	----	----	---

Additional standard belt widths are available in steps of 76.3 mm (3.00 in.) Additional non-standard belt widths are available in steps of 25.4 mm (1.00 in.)

2974	117.1	104090	23399	25.0	16.79	20	20	10
------	-------	--------	-------	------	-------	----	----	----

General belt tolerance is +0/-0.4% at 23°C/73°F and 50% RH. For exact belt width contact Customer Service. Non standard belt width on request.

*Max. Load per Drive Sprocket. Belt material: POM-SLF 2300 N (517 lbf), PP 1300 N (292 lbf)

**Max. Spacing between wear strips, Carry: 152 mm (6 in.); Return: 304 mm (12 in.)

= Single Link



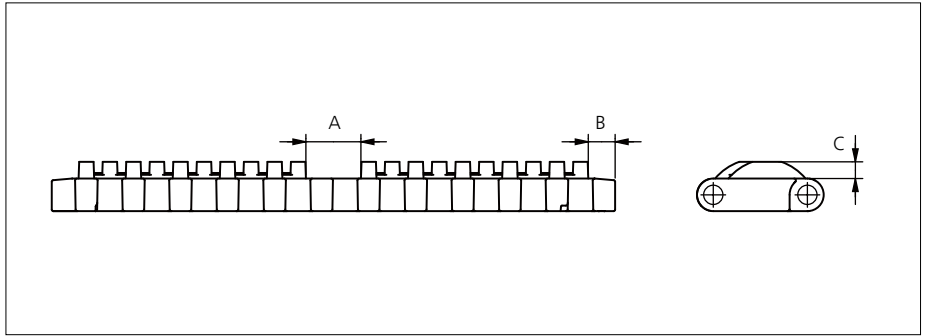
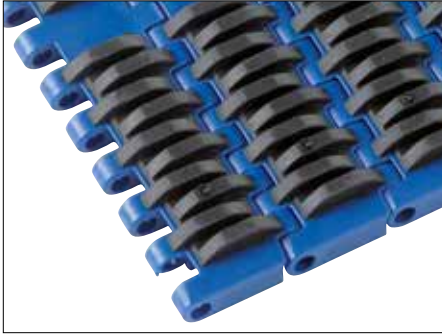
STANDARD

STRAIGHT RUNNING

PITCH 25.4 MM/1.00 IN

Accessories

Rubber Top

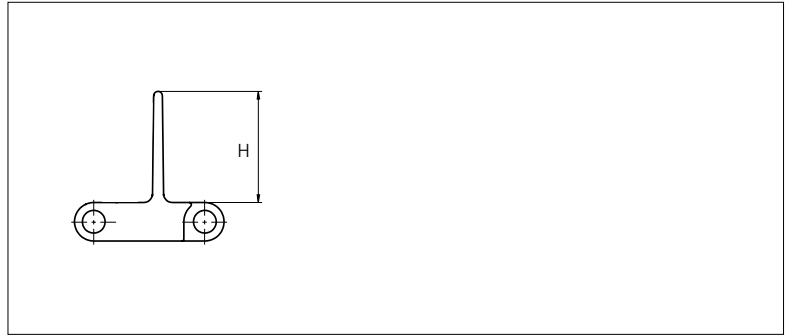
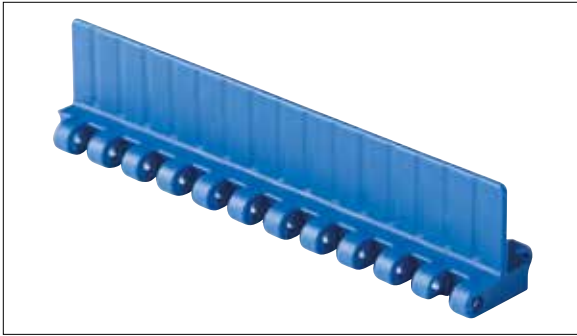


Type	Belt Material & color	Rubber Material & color	A		B		C		Link size	Width	
			mm	in	mm	in	mm	in		mm	in
Curved Rib	PP B	03 K	14.9	0.58	7.3	0.28	4.5	0.17	K300	75.8	2.98
									K600	152.0	5.98

Non Standard material and color: See uni Material and Color Overview.

Accessories

Flight

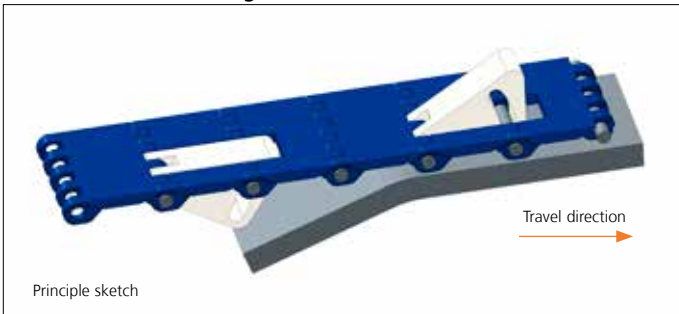


Type	Flight Material & color	H		Link size	Width		Indent	
		mm	in		mm	in	mm	in
Non Stick	PP-I B W	25.4	1.00	K600	152.0	5.98	0.0	0.00
	POM-SLF B							

Non Standard material and color: See uni Material and Color Overview.

Accessories

Non Standard uni AmFlight

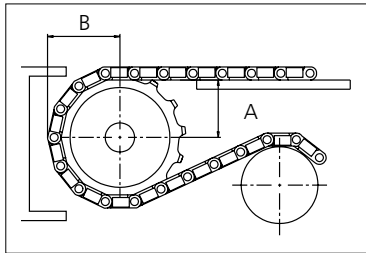
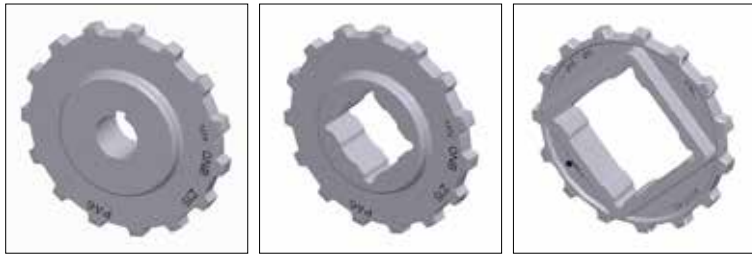


Other Non Standard option: See uni AmFlight Overview.

Sprocket

No of teeth	Bore size										Overall diameter		Pitch diameter		Hub diameter		A-dimension		B-dimension		Single row/Two way	Double row/Two way	Molded PA6 LG	Machined PA6 N
	Pilot bore	1.00		1.18		1.25		1.50		1.57														
	mm	25.4	30.0	31.8	38.1	40.0	60.0	63.5	mm	in	mm	in	mm	in	mm	in	mm	in						
Z10	x	●	●	●	■	●			80.3	3.16	82.2	3.24	65.0	2.56	34.7	1.36	45.5	1.79	x		x			
Z12	x	●	●	●	■	■			96.8	3.81	98.1	3.86	70.0	2.76	43.0	1.69	53.5	2.11	x		x			
Z15	x		●	●	■	■	■	■	121.5	4.78	122.2	4.81	¹ 70.0 ² 100.0 ³ 104.0 ⁴ 104.0	¹ 2.76 ² 3.94 ³ 4.09 ⁴ 4.09	55.4	2.18	65.5	2.58	x		x			
Z18	x		●	●	■	■	■	■	146.0	5.75	146.3	5.76	¹ 70.0 ² 104.0 ³ 120.0 ⁴ 120.0	¹ 2.76 ² 4.09 ³ 4.72 ⁴ 4.72	67.6	2.66	77.5	3.05	x		x			
Z19	x		●	●	■	■	■	■	154.2	6.07	154.3	6.07	¹ 70.0 ² 120.0 ³ 120.0 ⁴ 120.0	¹ 2.76 ² 4.72 ³ 4.72 ⁴ 4.72	71.7	2.82	81.6	3.21	x		x			

● Moulded sprocket ■ Moulded sprocket ■ Moulded sprocket



Same sprocket type as for the uni QNB serie.
 Other sprocket sizes are available upon request.
 Two-part sprockets are available upon request.
 Round bores are always delivered with keyway.
 Other bore sizes are available upon request.
 uni Retainer Rings: See uni Retainer Ring data sheet.
 Width of tooth = 10.0 mm (0.39 in)
 Width of sprocket = 25.0 mm (0.98 in)

Max load per sprocket shown does not take bore size into account.
 Please also ensure that sufficient size shaft is chosen for corresponding load.

For correct sprocket position: See uni Assembly Instructions for uni QNB.
 For more detailed sprocket information, contact Customer Service.

Non standard material and color: See uni Material and Color Overview.



Conveyor



Seamless



Modular



Timing



Transmission



Fabrication & service

Solid advice
For all your belting needs
Local stock & service
www.ammeraalbeltech.com

Ammeraal Beltech Modular A/S
Hjulmagervej 21
DK-7100 Vejle

T +45 7572 3100
F +45 7572 3348
admin@unichains.com
www.unichains.com

This information is subject to alteration due to continuous development. Ammeraal Beltech will not be held liable for the incorrect use of the above stated information. This information replaces previous information. All activities performed and services rendered by Ammeraal Beltech are subject to general terms and conditions of sale and delivery, as applied by its operating companies.