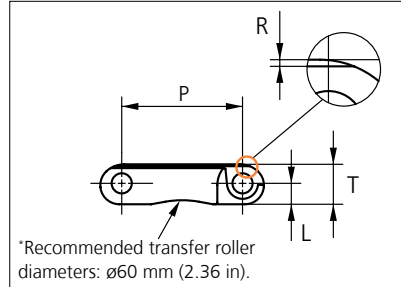
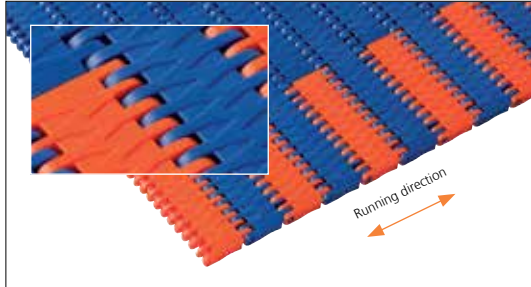




Plastic Modular Belt

Series **uni JCB** Type **Y**



Straight running belt
 Nominal pitch: 25.4 mm (1.00 in)
 Surface type: Y Pattern surface grid
 Surface opening: 0%
 Backflex radius: 25.0 mm (0.98 in)
 Pin diameter: 4.0 mm (0.16 in)

Belt material & color	POM SLF B
Pin material & color	PA6.6 B PA6.6 O *

	mm	in		mm	in
P (Nominal)	25.4	1.00	T	8.4	0.33
L	4.4	0.17	R	0.4	0.02

Pom SLF orange or yellow links can be used as SAFE WALK markers.
 *Only for K200

Belt width		Permissible tensile force (Belt/pin material)		Belt weight (Belt/pin material)		*Min No drive sprocket per shaft	Number of wear strips (min no)	
		POM SLF/PA6.6		POM SLF/PA6.6			***Carry (pcs)	**Return (pcs)
mm	in	N	lbf	kg/m	lb/ft			
50.3	2.0	1761	396	0.3	0.22	2	2	2
76	3.0	2660	598	0.5	0.33	2	2	2
153	6.0	5355	1204	1.0	0.67	2	2	2
229	9.0	8015	1802	1.5	1.00	2	2	2
305	12.0	10675	2400	2.0	1.33	3	3	2
382	15.0	13370	3006	2.5	1.67	3	3	2
458	18.0	16030	3604	3.0	2.00	4	4	2
534	21.0	18690	4202	3.5	2.33	4	4	2
610	24.0	21350	4799	4.0	2.66	5	5	3
687	27.0	24045	5405	4.5	3.00	5	5	3
763	30.0	26705	6003	5.0	3.33	6	6	3
839	33.0	29365	6601	5.5	3.67	6	6	3
915	36.0	32025	7199	5.9	4.00	7	7	4

Standard Increments in belt width: 76.3 mm (3.00 in).

1983	78.1	69405	15602	12.9	8.66	14	14	7
------	------	-------	-------	------	------	----	----	---

Standard Increments in belt width: 76.3 mm (3.00 in).

2974	117.1	104090	23399	19.3	12.99	20	20	10
------	-------	--------	-------	------	-------	----	----	----

General belt tolerance is +0/-0.4% at 23°C/73°F and 50% RH. For exact belt width contact Customer Service. Non standard belt width on request.

*Max. Load per Drive Sprocket. Belt material: POM-SLF 2300 N (517 lbf).

**Max. Spacing between wear strips, Carry: 152 mm (6 in); Return: 304 mm (12 in).

***Full Carry way Support (FS) deck of wearstrip material recommended for safe walk belts.

= Single Link



STANDARD

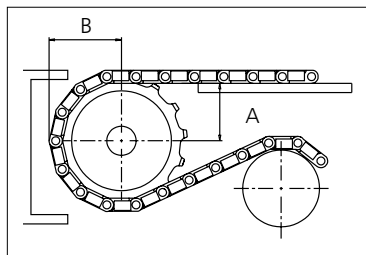
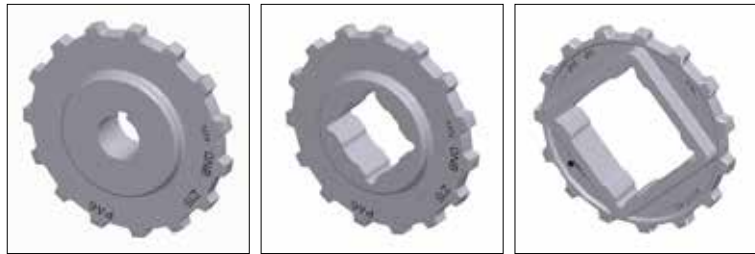
STRAIGHT RUNNING

PITCH 25.4 MM/1.00 IN

Sprocket

No of teeth	Bore size									Overall diameter		Pitch-diameter		Hub-diameter		A-dimension		B-dimension		Single row/Two way	Double row/Two way	Molded PA6 LG	Machined PA6 N	
	Pilot bore	in	1.00	1.18	1.25	1.50	1.57	2.36	2.50															
		mm	25.4	30.0	31.8	38.1	40.0	60.0	63.5	mm	in	mm	in	mm	in	mm	in							
Z10	x		●	●	●	■	●			80.3	3.16	82.2	3.24	65.0	2.56	34.7	1.36	45.5	1.79	x		x		
Z12	x		●	●	●	■	●			96.8	3.81	98.1	3.86	70.0	2.76	43.0	1.69	53.5	2.11	x		x		
Z15	x			●	●	■	●	■	2	1	121.5	4.78	122.2	4.81	100.0 104.0	2.76 4.09	55.4	2.18	65.5	2.58	x		x	
Z18	x			●	●	■	●	■	2	1	146.0	5.75	146.3	5.76	70.0 104.0 120.0	2.76 4.09 4.72	67.6	2.66	77.5	3.05	x		x	
Z19	x			●	●	■	■	■	1	1	154.2	6.07	154.3	6.07	70.0 120.0	2.76 4.72	71.7	2.82	81.6	3.21	x		x	

● Moulded sprocket ■ Moulded sprocket ■ Moulded sprocket



Same sprocket type as for the uni QNB serie.
 Other sprocket sizes are available upon request.
 Two-part sprockets are available upon request.
 Round bores are always delivered with keyway.
 Other bore sizes are available upon request.
 uni Retainer Rings: See uni Retainer Ring data sheet.
 Width of tooth = 10.0 mm (0.39 in)
 Width of sprocket = 25.0 mm (0.98 in)

Max load per sprocket shown does not take bore size into account.
 Please also ensure that sufficient size shaft is chosen for corresponding load.

For correct sprocket position: See uni Assembly Instructions for uni JCB.
 For more detailed sprocket information, contact Customer Service.

Non standard material and color: See uni Material and Color Overview.

uni JCB Y/1402



Solid advice
 For all your belting needs
 Local stock & service
www.ammeraalbeltech.com

Ammeraal Beltech Modular A/S
 Hjulmagervej 21
 DK-7100 Vejle

T +45 7572 3100
 F +45 7572 3348
 admin@unichains.com
 www.unichains.com

This information is subject to alteration due to continuous development. Ammeraal Beltech will not be held liable for the incorrect use of the above stated information. This information replaces previous information. All activities performed and services rendered by Ammeraal Beltech are subject to general terms and conditions of sale and delivery, as applied by its operating companies.