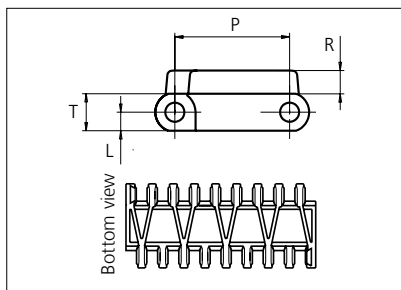
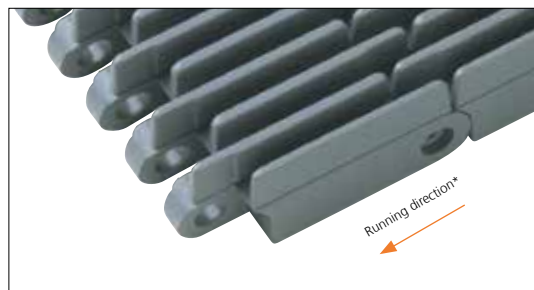




Plastic Modular Belt

Serie **uni OPB 4V** Type **23% Rib**



Straight running belt
Nominal pitch: 50.0 mm (1.97 in)
Surface type: Rib Top
Surface opening: 23%
Backflex radius: 300.0 mm (11.80 in)
Pin diameter: ø8 mm (1.97 in)

*uni-chains recommends this travel direction.
However, travel in both directions is possible.

Note: uni OPB 36% 4V are listed in the USDA "Accepted Meat and Poultry Equipment" publication as accepted food contact.

Belt material & color	PP-HW LB	PP G		mm	in		mm	in
Pin and lock material & color	Pin: PP-HW LB	Pin: PP W	T	16.0	0.63	P (Nominal)	50.0	1.97
			L	8.0	0.31	R	10.0	0.39

Non standard material and color: See uni Material and Color Overview.

Alternative pin and lock materials: Trilock: PP-HW **LB** Endlock: PP **W** **G** **B** PE **W** **B** Lockpin: PP **W** PE **W** PA6.6 **N** **B** PBT **LG**
Pin: PP **W** PE **W** PBT **LG** SS304 and SS316

Belt width		Permissible tensile force (Belt/pin material)		Belt weight (Belt/pin material)		*Min. No. drive sprocket per shaft	Number of wear strips (Min. No.)	
		PP-HW/PP-HW		PP-HW/PP-HW			**Carry (pcs)	**Return (pcs)
mm	in	N	lbf	kg/m	lb/ft			
152	6.0	1672	376	1.5	0.99	2	2	2
303	11.9	3333	749	2.9	1.98	3	3	2
455	17.9	5005	1125	4.4	2.97	4	4	2
606	23.9	6666	1499	5.9	3.95	5	5	3
758	29.8	8338	1874	7.4	4.94	6	6	3
909	35.8	9999	2248	8.8	5.93	7	7	4
1061	41.8	11671	2624	10.3	6.92	8	8	4
1212	47.7	13332	2997	11.8	7.90	9	9	5
1364	53.7	15004	3373	13.2	8.89	10	10	5
1515	59.6	16665	3746	14.7	9.88	11	11	6
1667	65.6	18337	4122	16.2	10.87	12	12	6
1818	71.6	19998	4496	17.6	11.85	13	13	7

Additional standard belt widths are available in steps of 151.5 mm (5.96 in.) Additional non-standard belt widths are available in steps of 33.5 mm (1.32 in.)

2576	101.4	28336	6370	25.0	16.79	18	18	9
------	-------	-------	------	------	-------	----	----	---

Additional standard belt widths are available in steps of 151.5 mm (5.96 in.) Additional non-standard belt widths are available in steps of 33.5 mm (1.32 in.)

2879	113.3	31669	7119	27.9	18.77	20	20	10
------	-------	-------	------	------	-------	----	----	----

General belt tolerance is +0/-0.4% at 23°C/73°F and 50% RH. For exact belt width contact Customer Service. Non standard belt width on request.

*Max. Load per Drive Sprocket. Belt material: POM 2500 N (562 lbf), PP 1200 N (270 lbf), PE 500 N (270 lbf)

**Max. Spacing between wear strips, Carry: 152 mm (6 in.) ; Return: 304 mm (12 in.)



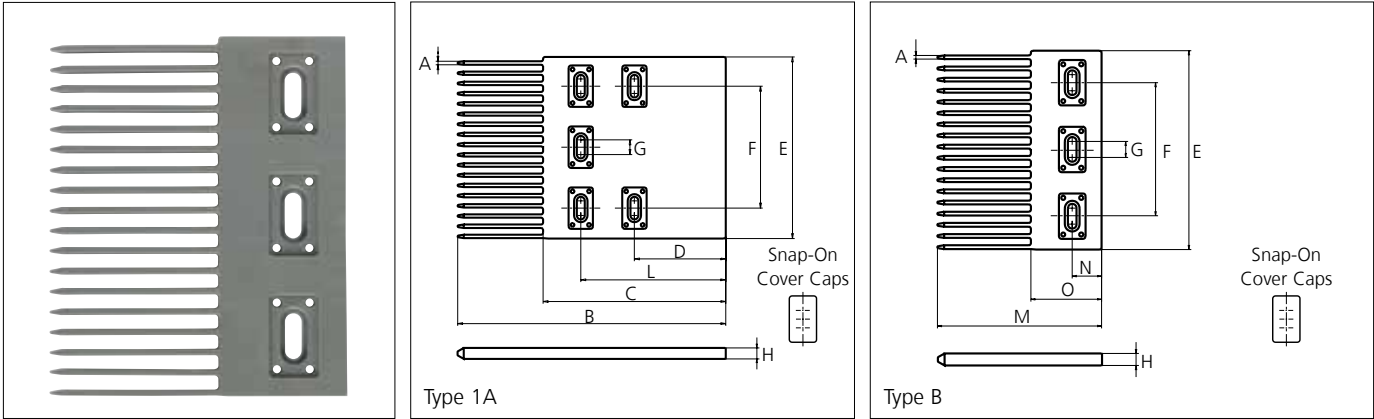
STANDARD

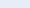
STRAIGHT RUNNING

PITCH 50.0 MM/1.97 IN

Accessories

Finger Plates



Type		Material & color		A		B		C		D		E	
				mm	in	mm	in	mm	in	mm	in	mm	in
Single Sided		POM-DI 	2.8	0.11	220.0	8.66	150.0	5.91	75.0	2.95	149.0	5.87	
Single Sided													
F		G		H		L		M		N		O	
mm	in	mm	in	mm	in	mm	in	mm	in	mm	in	mm	in
100.0	3.94	12.0	0.47	9.0	0.35	119.0	4.69	123.0	4.84	22.0	0.87	53.0	2.09

All uni-chains belt systems are available in a raised rib version that can be supplied with matching finger plates, alsocalled combs.

The finger plates are supplied with cover caps which can be attached when the finger plate has been installed. The cover caps can be removed by using a screwdriver that can be inserted between the cover and finger plate. In order to adjust to belt width variations caused by temperature fluctuations, a slider facilitates the sideways movement of the finger plates.

Non Standard material and color: See uni Material and Color Overview.

Sprocket

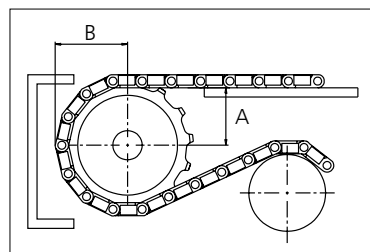
No of teeth	Bore size													Overall diameter		Pitch-diameter		Hub-diameter		A-dimen- sion		B-dimen- sion		Single row/Two way	Double row/Two way	Molded PA6 LG	Machined PA6 N
	Pilot Bore	in	0.75	0.78	0.98	1.00	1.18	1.25	1.50	1.57	2.36	2.50	3.54														
	mm	19.1	20.0	25.0	25.4	30.0	31.8	38.1	40.0	60.0	63.5	90.0	mm	in	mm	in	mm	in	mm	in	mm	in					
Z06	x				●	●	●	■	●	■			94.5	3.72	100.3	3.95	65	2.56	35.5	1.40	58.6	2.31	x		x		
Z08	x				●	●	●	■	●	■			129	5.08	131.1	5.16	65	2.56	52.6	2.07	74	2.91	x		x		
Z10	x					●	●	■	●	■			160.1	6.30	162.4	6.39	65	2.56	69.2	2.72	89.7	3.53	x		x		
Z12	x					●	●	■	●	■			191.5	7.54	193.9	7.63	65	2.56	85.7	3.37	105.5	4.15	x		x		
Z13	x					●		■	●	■			207.3	8.16	209.7	8.26	72	2.83	93.8	3.69	113.4	4.46	x		x		
Z13											■		207.3	8.16	209.7	8.26	150	5.91	93.8	3.69	113.4	4.46	x			x	
Z16	x					●		■	●	■		■	254.8	10.03	257.3	10.13	200	7.87	118.2	4.65	137.1	5.40	x			x	

■ Molded sprocket

● Molded sprocket

■ Machined sprocket

● Machined sprocket



Other sprocket sizes are available upon request.
 Two-part sprocket are available upon request.
 Round bores are always delivered with keyway.
 Other bore sizes are available upon request.
 uni Retainer Rings: See uni Retainer Ring data sheet
 Width of tooth = 11.0 mm (0.43 in)
 Width of sprocket = 42.3 mm (1.67 in)

Max load per sprocket shown does not take bore size into account.
 Please also ensure that sufficient size shaft is chosen for corresponding load.

For correct sprocket position: See uni Assembly Instructions for uni OPB.
 For more detailed sprocket information. contact Customer Service.

Non standard material and color: See uni Material and Color Overview.



Conveyor



Seamless



Modular



Timing



Transmission



Fabrication
& service

Solid advice
For all your belting needs
Local stock & service
www.ammeraalbeltech.com

Ammeraal Beltech Modular A/S
Hjulmagervej 21
DK-7100 Vejle

T +45 7572 3100
F +45 7572 3348
admin@unichains.com
www.unichains.com

This information is subject to alteration due to continuous development. Ammeraal Beltech will not be held liable for the incorrect use of the above stated information. This information replaces previous information. All activities performed and services rendered by Ammeraal Beltech are subject to general terms and conditions of sale and delivery, as applied by its operating companies.