

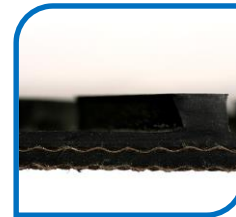
**Belt : I150-2CT**

**Construction**



Top Cover

Material : SBR  
 Color : Black  
 Profile : CT  
 Thickness : 0,188  
 Hardness - ShA : 70



Bottom Cover

Material : Polyester  
 Color : Brown  
 Profile : Text.  
 Thickness : -  
 Hardness - ShA : -

Plies / Weaving

Number of plies : 2  
 Fabric Material : Polyester  
 Lateral Rigidity (Weft) : Flexible  
 Internal Material : SBR

**Working Characteristics**

Overall Thickness : 0,347  
 Working Load - lbs/in : 160

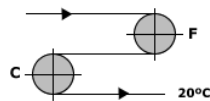
Overall Weight - lbs/ft<sup>2</sup> : 1,5  
 % Of Elongation : 1,5

Working Temperature (°F) : -10 / 200

Coefficient of friction - Bottom

-On Steel : 0,22  
 -On Plastic : 0,2  
 -On Rollers : 0,05

Minimum Diameter (F) : 4"  
 Minimum Diameter (C) : 4"



F = Flexing  
 C = Back Flexing

**Recommended Joint : Metallic**

Alligator® Lacing : 15  
 Clipper® Lacing : 1  
 Ready Set™ Fasteners : 125

Bolt Hinged Fasteners : N/R  
 Rivet Hinged Fasteners : N/R

**Recommended Joint : Endless**

Hot Splice : ESD  
 Cooking Temperature (°F) : On Demand  
 Pressure (lbs) : On Demand

Cold Splice : ESD  
 Glue To Use : On Demand

**Other Specifications**

FDA : No      Antistatic : No      Antimicrobial : No