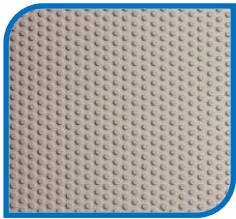


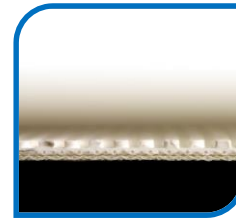
**Belt : T/NPW**

**Construction**



Top Cover

Material : PU  
Color : White  
Profile : Nobby  
Thickness : 0,035  
Hardness - ShA : 92



Bottom Cover

Material : Polyester  
Color : White  
Profile : Text.  
Thickness : -  
Hardness - ShA : -

Plies / Weaving

Number of plies : 2  
Fabric Material : Polyester  
Lateral Rigidity (Weft) : Rigid  
Internal Material : PU

**Working Characteristics**

Overall Thickness : 0,091  
Working Load - lbs/in : 34

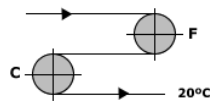
Overall Weight - lbs/ft<sup>2</sup> : 0,35  
% Of Elongation : 1

Working Temperature (°F) : -4 / 212

Coefficient of friction - Bottom

-On Steel : 0,15  
-On Plastic : 0,2  
-On Rollers : 0,05

Minimum Diameter (F) : 1"  
Minimum Diameter (C) : 1"



F = Flexing  
C = Back Flexing

**Recommended Joint : Metallic**

Alligator® Lacing : 1  
Clipper® Lacing : 1XSP  
Ready Set™ Fasteners : 62

Bolt Hinged Fasteners : N/R  
Rivet Hinged Fasteners : N/R

**Recommended Joint : Endless**

Hot Splice : EZ  
Cooking Temperature (°F) : On Demand  
Pressure (lbs) : On Demand

Cold Splice : ESD  
Glue To Use : On Demand

**Other Specifications**

FDA : Yes      Antistatic : No      Antimicrobial : No