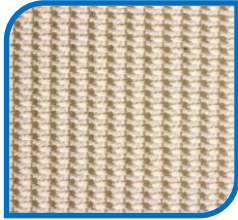


**Belt : FP24-2W**

**Construction**



Top Cover

Material : PVC  
 Color : White  
 Profile : RT  
 Thickness : 0,16  
 Hardness - ShA : 45



Bottom Cover

Material : Polyester  
 Color : Natural  
 Profile : Text.  
 Thickness : -  
 Hardness - ShA : -

Plies / Weaving

Number of plies : 2  
 Fabric Material : Polyester  
 Lateral Rigidity (Weft) : Rigid  
 Internal Material : PVC

**Working Characteristics**

Overall Thickness : 0,22  
 Working Load - lbs/in : 45

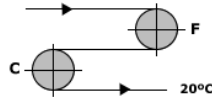
Overall Weight - lbs/ft<sup>2</sup> : 0,86  
 % Of Elongation : 1

Working Temperature (°F) : 23 / 176

Coefficient of friction - Bottom

-On Steel 0,16  
 -On Plastic 0,14  
 -On Rollers 0,05

Minimum Diameter (F) 1,77"  
 Minimum Diameter (C) 1,77"



F = Flexing  
 C = Back Flexing

**Recommended Joint : Metallic**

Alligator® Lacing 7  
 Clipper® Lacing 1XSP  
 Ready Set™ Fasteners 62

Bolt Hinged Fasteners N/R  
 Rivet Hinged Fasteners N/R

**Recommended Joint : Endless**

Hot Splice EZZ  
 Cooking Temperature (°F) On Demand  
 Pressure (lbs) On Demand

Cold Splice ESD  
 Glue To Use On Demand

**Other Specifications**

FDA Yes Antistatic No Antimicrobial No